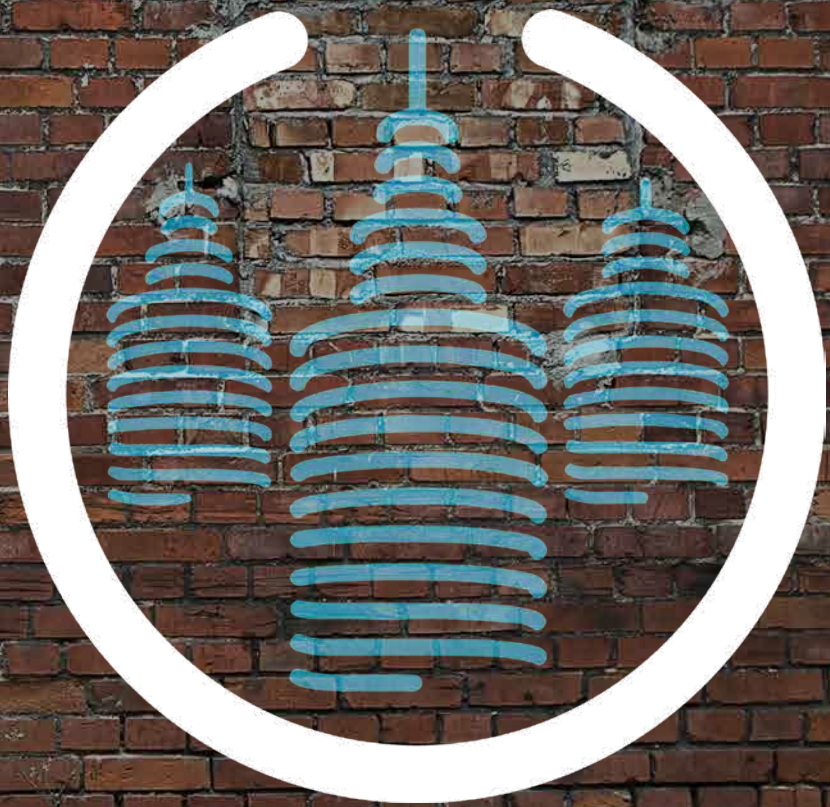




CITY OF REFUGE
CHURCH

Prospectus





Greetings!

Thank you for taking the time to hear about all that God is doing as we plant City Of Refuge Church in the Eau Claire Community. According to North American Mission board Statistics show that 85% of North American Churches are either stagnant or declining. Since the church is the chosen vehicle by which God desires to make disciples. We must be in the business of starting new healthy churches. With the partnerships of established churches, we will be able to start new churches that can help reach our cities, nation and world with the Gospel. We don't plant new churches because we have lost faith in our established churches. We plant new churches because we desire to reach more people with the good news of Jesus Christ. The more gospel-focused churches we have, the more people we can lead to Jesus.

Why Eau Claire?

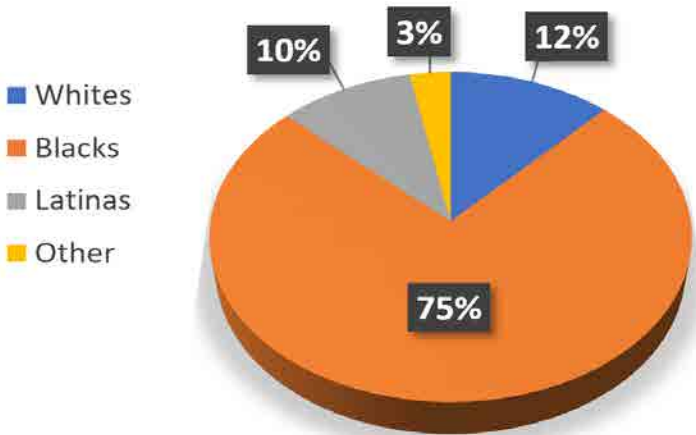
“This is a place the church wants nothing to do with and people only come around if they have the cops with them.” -A Local Resident

The Eau Claire Community was once a thriving neighborhood in the city of Columbia, SC. As an affluent, predominantly white neighborhood with many growing business and prestigious colleges in the community, it was the ideal American suburb. The ideal was shattered during the early '70s due to “white flight,” as many families left the community because of integration. In the early '80s there was a temporary renewal. The neighborhood started to find its footing again as a predominantly African-American suburb. But once again the area was ravaged as middle-class African-Americans left the community in the early '90s due to a variety of reasons. This stripped Eau Claire of much of its resources, leaving the poor and older “remnant” spiritually abandoned, broken and forgotten. Many now try to cope with feelings of being forgotten, abandoned and hopeless by pursuing sex, status and possessions. But none of these false gods are delivering.



Demographics of Eau Claire:

Population Estimate: 21,700 Residents
Median Age: 35 years old
Median Income: \$30,600/year



What Will Deliver?

We believe there is only one hope that will deliver our community: the Gospel of Jesus Christ. The Gospel offers a deeper, more unified community in Christ than this world could ever give. Jesus breathes life into dead places, gives power to the weak and dignity to the rejected. We want to smash the idols that say acquiring more wealth, or becoming successful, will bring significance. We want to show that Jesus alone gives worth and in Him all are welcomed as children of the King.

We want to see Eau Claire resurrected and reflecting God's Kingdom glory in Columbia.





Our Vision

We see a neighborhood Church of refuge that is **Calling** all people to Jesus, **Connecting** them to His people, and **Commissioning** them as ambassadors of Jesus to our neighborhood, our city and our world.

Our Mission

To make Disciples that then make Disciples who impact our community, city, and world with the Gospel.



Called

- We want to Call all people to repent and believe in our Savior's loving grace to see the Eau Claire neighborhood reconciled to Christ (Eph 2:1-10).

• We will do this through faithful and contextualized gospel proclamation, through active continuous repentance and confession in word and deed, and through gospel-centered worship.

Connected

- We want to **Connect** our neighborhood to the unity found in the greater family of Christ, including the global church family (Eph 2:11-22).

• We will do this through two means of engagement:

Community groups meeting in places of peace with believers communing, examining the scriptures together and praying, and

Missional groups seeking to connect seekers with small expressions of the church through acts of gospel-centered living to show off God's glory.

Commissioned

- We want to **Commission** people to live as kingdom citizens before the world and heaven (Eph 1:9-10, 3:7-10).

• We want to raise up local and global missionaries from Eau Claire to reach their neighbors, friends and families. And through church planting send out leaders to reach new neighborhoods and cities. We want to develop a culture of missionaries that engage others where they work, play and stay.



Jarrian (JayWill) is planting City of Refuge in the Eau Claire Community of his hometown, Columbia, SC. JayWill was previously a teaching pastor at Generation Church in Columbia from 2016-2018 and is currently a church-planting resident at Riverside Community Church in Columbia. He completed his studies at Christian Leaders Institute in 2016. He and Krystal have been married for eight years, and they have a seven-year old son, Zion.

Our Timeline

FALL
2019

WINTER
2020

SPRING
2020

- + Start Church-Planting Residency with Riverside Community Church
- + Begin fundraising for church plant and residency
- + Begin Leaders Collective
- + Begin vision and prayer nights
- + Begin building core group

- + Acts 29 assessment
- + Finish Leaders Collective

- + Start community outreach
- + Take SCBC assessment
- + Begin weekly core small group gatherings

SUMMER
2020

FALL
2020

SPRING
2021



- + Launch 2nd small group
- + Begin monthly preview services
- + Continue to build launch team

- + Develop small group leaders.
- + Continue community outreach
- + Begin building launch team

**Launch official
public gathering**



Sending church:



riversidecommunitychurch.org

Training provided by:

LEADERSCOLLECTIVE ▼

leaderscollective.com

Prospective Affiliations:





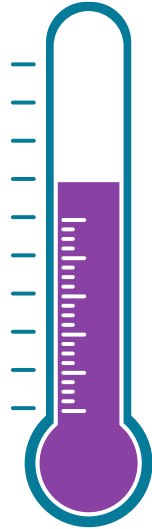
Residency Support

Residency Covers:

- o Salary for 18 months
- o Staff Expenses
- o Participation in Leaders Collective
- o Assessment Costs (Acts 29 and SCBC)

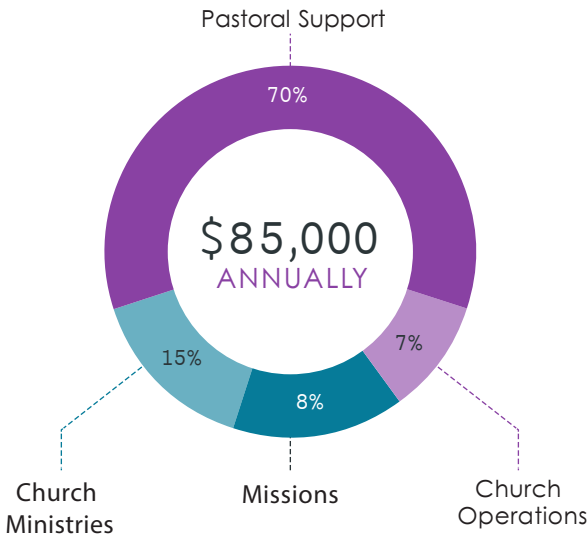
Goal: \$95,000

Current: \$65,000



We are partnering with Riverside Community Church as our sending Church, and we have additional partner churches and individuals contributing financially towards the residency and towards leadership development.

Launch Budget





Church & network partners

Partner Tier	Monthly Amount	Annually
Tier 1 Partner	\$250	\$3000
Tier 2 Partner	\$500	\$6000
Tier 3 Partner	\$1,500	\$18000

External individual supporters

Tier 1 Partner	\$50	\$600
Tier 2 Partner	\$100	\$1200
Tier 3 Partner	\$250	\$3000

Launch team

Total Annual Giving	\$24,000
---------------------	----------

* The Eau Claire Community will not likely be able to sustain our church plant within the conventional 3-5 year model. Because of this, we need partners to join us for an extended time period until we are self-sustaining. We ask that you prayerfully consider joining us at one of three tiers to enable us to plant healthy with longevity in mind. We do also accept one-time gifts or other monthly financial partnerships.



Get involved!

VISIT OUR WEBSITE

Colacityrefuge.org

Interested in being a partner

To join our core team

Sign-up for our newsletter

GIVE

We are raising funds via church partners, denominational support, our Launch Team, and other outside support.

Instructions to give are on the website

JOIN THE CORE TEAM

We are praying that God would provide us with 25-30 committed adults for our Launch Team by January 2021. If you are interested in being a part of the City of Refuge, fill out the interest form on our website. After receiving your application, a member of our Leadership Team will schedule a meeting with you to discuss being on the City of Refuge Launch Team

QUESTIONS?

E-mail JayWill at partner@colacityrefuge.org.



Contact

web: www.colacityrefuge.org
email: partner@colacityrefuge.org
phone: (803) 542-5107